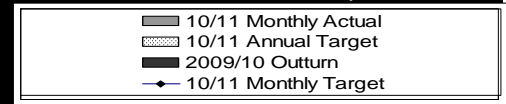


PI Ref No	PI Description	Responsible Officer & Directorate	Outturn 2008/09	Target 2009/10	Actual 2009/10	Actual December 2009/10	Target 2010/11	Target December 2010/11	Actual December 2010/11	Variance (comparing actual to target)	Direction of Travel (comparing Dec 10/11 and Dec 09/10)	Traffic Light (RED / GREEN)
Theme 1: One Tower Hamlets												
Strategic10 2	Percentage of earners that are LP7 or above of Local Authority staff that are women Measured in: % (This indicator was a former BVPI and is monitored as part of the Council's Workforce to Reflect the Community Strategy) Good Performance: Higher	Steve James Resources Cllr A Choudhury	50.47	50	51	49.36	50	50	50	MET		GREEN
Monthly Performance: The December outturn is 50.16%, although this month shows a small reduction, current performance is expected to improve to achieve the end of year target , subject to turnover at this level through restructures and reviews.												
Strategic10 3	Percentage of earners that are LP7 or above of Local Authority staff that are from an ethnic minority. Measured in: % (This indicator was a former BVPI and is monitored as part of the Council's Workforce to Reflect the Community Strategy) Good Performance: Higher	Steve James Resources Cllr A Choudhury	17.1	25	17	16.74	27	27	21	-22.00%		RED
Monthly Performance: Of the group of 148 employees , 32 are BME. A total of 40 would be needed to meet the agreed target of 27% at LP07 and above. This month shows a slight reduction. However, action will continue to be taken over the medium term , recognising that turnover at these levels is relatively low (proposals currently being prepared for 2011/12) to provide targeted career development programmes as part of the Council's workforce to reflect the community strategy.												



Appendix 8 - Strategic Performance Indicators

PI Ref No	PI Description	Responsible Officer & Directorate	Outturn 2008/09	Target 2009/10	Actual 2009/10	Actual December 2009/10	Target 2010/11	Target December 2010/11	Actual December 2010/11	Variance (comparing actual to target)	Direction of Travel (comparing Dec 10/11 and Dec 09/10)	Traffic Light (RED / GREEN)
Strategic10 4	Percentage of earners that are LP7 or above of Local Authority staff who have a disability (excluding those in maintained schools.) Measured in: % (This indicator was a former BVPI and is monitored as part of the Council's Workforce to Reflect the Community Strategy. Staff who have a disability' are those that identify themselves as such in the staff survey, against the definition provided in the Disability Discrimination Act 1995). Good Performance: Higher	Steve James Resources Cllr A Choudhury	2.1	4.7	1.54	1.48	5.4	5.4	2	-62.90%	↑	RED
Monthly Performance:												
Strategic10 5	Number of working days/shifts lost to sickness absence per employee. Measured in: % (the aggregate of working days lost due to sickness absence irrespective of whether this is self certified, certified by a GP or long term divided by the average number of FTE staff) Good Performance: Lower	Steve James Resources Cllr A Choudhury	8.95	7	8.54	8.74	6.5	7.01	7.73	-10.30%	↑	RED
Monthly Performance:												

Appendix 8 - Strategic Performance Indicators

PI Ref No	PI Description	Responsible Officer & Directorate	Outturn 2008/09	Target 2009/10	Actual 2009/10	Actual December 2009/10	Target 2010/11	Target December 2010/11	Actual December 2010/11	Variance (comparing actual to target)	Direction of Travel (comparing Dec 10/11 and Dec 09/10)	Traffic Light (RED / GREEN)
Strategic10 6	Response time to members enquiries - % completed within 10 working days - Corporate Measured in: % (The volume of enquiries closed which are answered within 10 working days/total volume of enquiries closed x 100%) Good Performance: Higher	John Williams Chief Executive's Mayor L Rahman	76.31	85	86.76	87.54	87	87	93.01	6.90%	↑	GREEN
Monthly Performance: The volume of MEs has remained consistent over the third quarter (c. 500 / month) - although December saw a drop in volume, likely due to the closure over the Christmas period. The overall performance for Q3 was 93.95% of MEs responded to within 10 working days. This continues to exceed the target of 87%. A marked improvement has been noted in the RSL performance, and they have met the target in Oct. and November, and overall for the quarter.												
Strategic10 Z	Percentage of complaints completed in time - Council as a whole - Stage 1 Measured in: % (within 20 working days) Good Performance: Higher	Claire Symonds Resources Mayor L Rahman	82	85	92	91	86	86	95	9.20%	↑	GREEN
Monthly Performance: Target exceeded												
Strategic10 1a	Variation of projected outturn from budget (+/-) Measured in: £million (variance from budget i.e. 0 equals no budget variance, positive figure equals overspend, negative figure equals under spend) Good Performance: Lower (closer to zero)	Alan Finch Resources Cllr A Choudhury	N/A	0	-0.031	N/A	0	0	1.103	-10.30%	N/A	RED

Appendix 8 - Strategic Performance Indicators

PI Ref No	PI Description	Responsible Officer & Directorate	Outturn 2008/09	Target 2009/10	Actual 2009/10	Actual December 2009/10	Target 2010/11	Target December 2010/11	Actual December 2010/11	Variance (comparing actual to target)	Direction of Travel (comparing Dec 10/11 and Dec 09/10)	Traffic Light (RED / GREEN)
<p>Monthly Performance: The overall forecast overspend is £1.103 million (this is at month 8 (Nov) as month 9 (Dec) information is not available). This is a slight increase from the previous quarter.</p> <p>Forecast overspend is due to continuing service demands within Adults Health & Wellbeing (£385k overspend forecast).</p> <p>Children School and Families is forecast to overspend of £330k due to school redundancy costs.</p> <p>Development and Renewal is forecasting an overspend of £398k, mainly due to a £343k overspend on Homelessness services.</p>												
Strategic10 9a	Customer Access volumes (channel shift) - total number of visits to Council Hot Lines Measured in: % (in conjunction with 109a/b/c, showing trends in contact volumes and in shifts between access channels) Good Performance: Lower	Claire Symonds Resources Mayor L Rahman	N/A	N/A	670,000	N/A	N/A	N/A	53,589	N/A	N/A	N/A
Strategic10 9b	Customer Access volumes (channel shift) - total number of visits to Council One Stop Shops Measured in: % (in conjunction with 109a/b/c, showing trends in contact volumes and in shifts between access channels) Good Performance: Lower	Claire Symonds Resources Mayor L Rahman	N/A	N/A	238,379	N/A	N/A	N/A	13,524	N/A	N/A	N/A
Strategic10 9c	Customer Access volumes (channel shift) - total number of visits to Council Websites Measured in: % (in conjunction with 109a/b/c, showing trends in contact volumes and in shifts between access channels) Good Performance: Higher	Claire Symonds Resources Mayor L Rahman	N/A	N/A	N/A	N/A	N/A	N/A	137,925	N/A	N/A	N/A
<p>Monthly Performance: Volume is down in December due to closure over the holiday period.</p>												
Strategic11 0a	Customer Access Overall Satisfaction Measured in: % Good Performance: Higher	Claire Symonds Resources Mayor L Rahman	N/A	N/A	N/A	N/A	90	90	90.7	0.80%	N/A	GREEN

PI Ref No	PI Description	Responsible Officer & Directorate	Outturn 2008/09	Target 2009/10	Actual 2009/10	Actual December 2009/10	Target 2010/11	Target December 2010/11	Actual December 2010/11	Variance (comparing actual to target)	Direction of Travel (comparing Dec 10/11 and Dec 09/10)	Traffic Light (RED / GREEN)
<p>Monthly Performance: Continued improvement in performance which is now in target. However slight upward distortion to figures caused by technical problems with web site satisfaction survey which is currently not able to be used.</p>												
Strategic11 1	<p>First contact resolution of calls to Hot Lines</p> <p>Measured in: % (% of people who answered positively to "How satisfied were you that your call today resolved the issue that you phoned us about?")</p> <p>Good Performance: Higher</p>	<p>Claire Symonds</p> <p>Resources Mayor L Rahman</p>	90	90	90	90	91	91	89.6	-1.50%	↓	RED
<p>Monthly Performance: Dip in performance driven by further dip in housing repairs resolution, down to 87%. This is matched by the sharp increase in repairs chase up calls received in December.</p>												
<p>Theme 2: A Great Place to Live</p>												
Strategic207. National154	<p>Net additional homes provided</p> <p>Measured in: Number (the sum of new build completions, minus demolitions, plus any gains or losses through change of use and conversions)</p> <p>Good Performance: Higher</p>	<p>Jackie Odunoye</p> <p>Development & Renewal Cllr R Khan</p>	2839	2999	2398	1544	2999	N/A	1120	N/A	↓	N/A
<p>Monthly Performance: THE FIGURES REPORTED ARE PROVISIONAL FIGURES ONLY AND SUBJECT TO FURTHER UPDATES AND AUDIT</p> <p>Performance is currently at 37.34% of the annual 2,999 target. The economic climate and bad weather conditions have both impacted upon performance against this annual target, additionally progress on net additional delivery is normally weighted towards the end of the year with many schemes completing within the last quarter .</p> <p>Out turn on this indicator is provisional due to an inherent time lag with the data's collection. Steps are currently being put in place to reduce this, improving the collection of third party data form external building control inspectorates and developers. Interrogation of this data indicates a large number of returns from developers remains outstanding which would significantly bring Q3 out turn up to approximately 1,722 units</p>												

Appendix 8 - Strategic Performance Indicators

PI Ref No	PI Description	Responsible Officer & Directorate	Outturn 2008/09	Target 2009/10	Actual 2009/10	Actual December 2009/10	Target 2010/11	Target December 2010/11	Actual December 2010/11	Variance (comparing actual to target)	Direction of Travel (comparing Dec 10/11 and Dec 09/10)	Traffic Light (RED / GREEN)																
<p>Year end out turn for 10/11 will be formally reported in Q3 2011/12 via the Annual Monitoring Return; for this a verification process commences in Spring 2011 verifying those units completed in year for which evidence had not been received. This will provide a higher and more accurate picture of net additions delivered as outstanding evidence will be back captured.</p> <p>6,357 net additional units have so far been completed since the start of the LAA period against a 3 year target of 8,997 (71.64% of the target). While overall delivery has been strong in terms of Tower Hamlets providing among the largest numbers of net additional units, performance has been hindered by the economic downturn causing the delay of a number of schemes due to be delivered within this time period. If a more long term view of housing delivery is taken, schemes delayed this year will complete in the near future 'causing' peaks in performance against this target.</p> <p>***Since reporting in Sept 10, the quarterly breakdowns have changed to 235 Q1, 31 Q2, and 814 Q3.</p>					<table border="1"> <caption>2009/10 Outturn and 2010/11 Target</caption> <thead> <tr> <th>Category</th> <th>Value</th> </tr> </thead> <tbody> <tr> <td>2009/10 Outturn</td> <td>1931</td> </tr> <tr> <td>2010/11 Target</td> <td>1287</td> </tr> </tbody> </table> <table border="1"> <caption>10/11 Monthly Actual</caption> <thead> <tr> <th>Month</th> <th>Value</th> </tr> </thead> <tbody> <tr> <td>June</td> <td>~100</td> </tr> <tr> <td>September</td> <td>~900</td> </tr> <tr> <td>December</td> <td>~1050</td> </tr> <tr> <td>March</td> <td>0</td> </tr> </tbody> </table>								Category	Value	2009/10 Outturn	1931	2010/11 Target	1287	Month	Value	June	~100	September	~900	December	~1050	March	0
Category	Value																											
2009/10 Outturn	1931																											
2010/11 Target	1287																											
Month	Value																											
June	~100																											
September	~900																											
December	~1050																											
March	0																											
Strategic208, National155	Number of affordable homes delivered (gross) Measured in: Number (the sum of social rent housing and intermediate housing - low cost home ownership and intermediate rent) Good Performance: Higher	Jackie Odunoye Development & Renewal Cllr R Khan	1064	1287	1931	853	1287	N/A	279	N/A	↓	N/A																
<p>Monthly Performance: THE FIGURES REPORTED ARE PROVISIONAL FIGURES ONLY AND SUBJECT TO FURTHER UPDATES AND AUDIT</p> <p>Quarterly reporting on this indicator is not spread evenly throughout the year, often with many units and schemes being completed within the final quarter. Consequently, profiling quarterly targets from renegotiated annual LAA targets of 1,287 is problematic. The total new affordable outturn in the first 3 quarters is 279 units; this is only 22% off the annual target; a number of schemes have been set back by the weather conditions in December. There are 15 schemes currently on site which are due to deliver completed units this financial year.</p> <p>Our projected outturn for 2010/11 is now 777 units. Bearing in mind past performance, our projected outturn for 2008-2011 is 3774, this is 2.3% lower than the 3 year LAA target of 3861 for the same period. The annual target for LAANI 155 of 1287 units was calculated with reference to a 3 year target, and at the time of setting these targets, we were hopeful that previous years' performance would be maintained. However, there have been a number of building projects which have not started on site as forecast, due to the financial climate.</p> <p>Our projection is still to include a small (currently unknown) number of additional completions accomplished via such schemes such as the HCA funded Purchase & Repair grant. We will not know this total until the HCA report these figures to us, however, they will bring out turn even closer to target. We are projecting a larger number of completions during 2012/13, a substantial number of which are already on site or starting on site.</p>					<table border="1"> <caption>2009/10 Outturn and 2010/11 Target</caption> <thead> <tr> <th>Category</th> <th>Value</th> </tr> </thead> <tbody> <tr> <td>2009/10 Outturn</td> <td>1931</td> </tr> <tr> <td>2010/11 Target</td> <td>1287</td> </tr> </tbody> </table> <table border="1"> <caption>10/11 Monthly Actual</caption> <thead> <tr> <th>Month</th> <th>Value</th> </tr> </thead> <tbody> <tr> <td>June</td> <td>~100</td> </tr> <tr> <td>September</td> <td>~150</td> </tr> <tr> <td>December</td> <td>~279</td> </tr> <tr> <td>March</td> <td>0</td> </tr> </tbody> </table>								Category	Value	2009/10 Outturn	1931	2010/11 Target	1287	Month	Value	June	~100	September	~150	December	~279	March	0
Category	Value																											
2009/10 Outturn	1931																											
2010/11 Target	1287																											
Month	Value																											
June	~100																											
September	~150																											
December	~279																											
March	0																											
Strategic223	Number of social rented housing completions for family housing (gross figures only) Measured in: Number (a count of the number of affordable housing - local authority, housing associations, and co-operative tenants. Family housing is 3 bedrooms or more) Good Performance: Higher	Jackie Odunoye Development & Renewal Cllr R Khan	393	405	619	316	405	N/A	43	N/A	↓	N/A																

Appendix 8 - Strategic Performance Indicators

PI Ref No	PI Description	Responsible Officer & Directorate	Outturn 2008/09	Target 2009/10	Actual 2009/10	Actual December 2009/10	Target 2010/11	Target December 2010/11	Actual December 2010/11	Variance (comparing actual to target)	Direction of Travel (comparing Dec 10/11 and Dec 09/10)	Traffic Light (RED / GREEN)
<p>THE FIGURES REPORTED ARE PROVISIONAL FIGURES ONLY AND SUBJECT TO FURTHER UPDATES AND AUDIT</p> <p>The projected outturn for 2010/11 is now 234 units (against an annual target of 405), as a number of schemes have been delayed into 2011/12.</p> <p>However, the outturn against the 3 year target would have us set to deliver at least 1246 social rented family housing units for the period 2008 - 2011. (08/09 - 393, 09/10 - 619, 10/11 - 234); this is 2.55% higher than the 3 year target of 1215 for the same period.</p> <p>There are also a number of grant funded units for 10/11 which need to be included on top of this figure; which the Affordable Homes Team will retrieve from the HCA's database at year end.</p> <p>Please also refer to commentary for NI155 above.</p>												
Strategic224	Percentage residents satisfied with outcome to ASB Measured in: % Good Performance: Higher	Jackie Odunoye Development & Renewal Cllr R Khan	47.6	60	67	59	65	65	72	10.70%	↑	GREEN
Monthly Performance: Target exceeded.												
Strategic225	Average time to re-let property (days) Measured in: Days (The time in calendar days from the day after tenancy is terminated up to and date when the new tenancy agreement starts.) Good Performance: Lower	Jackie Odunoye Development & Renewal Cllr R Khan	31.54	28	27.23	27.45	26	26	23.35	10.20%	↑	GREEN
Monthly Performance: Target exceeded.												

Appendix 8 - Strategic Performance Indicators

PI Ref No	PI Description	Responsible Officer & Directorate	Outturn 2008/09	Target 2009/10	Actual 2009/10	Actual December 2009/10	Target 2010/11	Target December 2010/11	Actual December 2010/11	Variance (comparing actual to target)	Direction of Travel (comparing Dec 10/11 and Dec 09/10)	Traffic Light (RED / GREEN)
Strategic226	Service charge collected (excluding major works) Measured in: £ (The overall collection level reported at the end of each reporting period after collection, write off and transfers are made) Good Performance: Lower	Jackie Odunoye Development & Renewal Cllr R Khan	15.3	15	12.6	16.5	11.5	11.5	9.44	17.90%	↑	GREEN
Monthly Performance: Target exceeded.												
Strategic227	Rent collected as percentage of rent due Measured in: % Good Performance: Higher	Jackie Odunoye Development & Renewal Cllr R Khan	99.66	100.01	99.97	99.6	100	100	99.32	-0.70%	↓	RED
Monthly Performance: Monthly target not met. Performance has weakened because of lower than normal payments received from tenants via standing orders and payments via the post office. We believe this is because of the financial demands of Christmas, analysis shows that some of this cash was recovered in the first week of January. Although we did run a 'pay your rent at Christmas' campaign for all tenants in arrears over £5 it does not appear to have had a positive impact on the December figures. Our intervention now is to make more focussed interventions at specific stages of our collection process with extra telephone calls also being made. One evening per week late night collection and two Saturdays a month collection will continue. While these efforts will help us get closer to the collection target it is anticipated we may not achieve target for year end. The result is very difficult to predict, current collection for week 41 is running at 99.7% so has moved up 0.4% which if continued would mean target is reached.												
Strategic202	Number of physical visits to public library premises Measured in: Number (based on a one week sample, an estimate of the total number of visits by members of the public to libraries for whatever purpose) Good Performance: Higher	Heather Bonfield Communities, Localities & Culture Mayor L Rahman	9,284.76	9,361.80	9,396.52	6,753.02	2,092,651	1,569,488	1,534,395	-2.20%	N/A	RED

Appendix 8 - Strategic Performance Indicators

PI Ref No	PI Description	Responsible Officer & Directorate	Outturn 2008/09	Target 2009/10	Actual 2009/10	Actual December 2009/10	Target 2010/11	Target December 2010/11	Actual December 2010/11	Variance (comparing actual to target)	Direction of Travel (comparing Dec 10/11 and Dec 09/10)	Traffic Light (RED / GREEN)
<p>Monthly Performance: The weather and the Christmas period has had an impact on the number of visitors to the libraries and idea stores. It is expected that the target will be achieved by year end.</p>												
Strategic206	<p>People killed or seriously injured in road traffic accidents</p> <p>Measured in: % (% change in number of people killed or seriously injured during the calendar year compared to the previous year) Good Performance: Higher (Lower)</p>	Jamie Blake Communities, Localities & Culture Mayor L Rahman	-9.1	3.3	4.5	N/A	12.7 (100)	75	66	12.00%	N/A	GREEN
<p>Monthly Performance: This indicator is based on the percentage change in number of people killed or seriously injured during the calendar year compared to the previous year. The figures are based on a 3 year rolling average, up to the current year.</p> <p>For the purpose of interim reporting, the actual number of people killed or seriously injured (KSI's) will be reported. The figures are released from the London Accident Analysis Unit and are based on the calendar year. A target of 100 KSI's has been set for Jan – December 2010.</p> <p>There is a time lag in reporting this indicator. The latest provisional figures show that this indicator is on target: There have been 9 fewer people killed or serious injured than anticipated. Between January to the end of September the number of KSI's was 66.</p>												
Strategic211. National192	<p>Percentage of household waste sent for reuse, recycling and composting</p> <p>Measured in: % (total tonnage of household waste collected which is sent for reuse, recycling, composting or anaerobic digestion divided by total tonnage of household waste collected.) Good Performance: Higher</p>	Jamie Blake Communities, Localities & Culture Mayor L Rahman	19.262	26	26.51	26.35	32	30.73	27	-12.10%	↑	RED
<p>Monthly Performance: Shanks recycling performance has continued to be lower than predicted and has affected the overall recycling achievements. Our recycling performance, like many other London boroughs, has plateaued this year. It is still possible to meet the target of 32% for end of year and the impact of the recent communications campaign should increase recycling in the final quarter. Our dry recycling performance is still likely to be in the top quarter when compared to other London Authorities.</p>												

Appendix 8 - Strategic Performance Indicators

PI Ref No	PI Description	Responsible Officer & Directorate	Outturn 2008/09	Target 2009/10	Actual 2009/10	Actual December 2009/10	Target 2010/11	Target December 2010/11	Actual December 2010/11	Variance (comparing actual to target)	Direction of Travel (comparing Dec 10/11 and Dec 09/10)	Traffic Light (RED / GREEN)
LAANI195a. National195a. Strategic212	Improved street and environmental cleanliness - litter Measured in: % Good Performance: Lower	Jamie Blake Communities, Localities & Culture Cllr S Ali	11	10	11	11	8	8	5.3	33.75%		GREEN
<p>Monthly Performance: This is the second set of results undertaken by the new independent inspectors [second of three tranches]. The maturing contractual relationship with Veolia and joint tasking and deployment of public realm / CS staff have had a beneficial effect on behaviours and contract management and the results remain encouraging. It should be noted that each tranche takes samples from different parts of the Borough and variations over the three tranches should be expected.</p>												
LAANI195b. National195b. Strategic213	Improved street and environmental cleanliness - detritus Measured in: % Good Performance: Lower	Jamie Blake Communities, Localities & Culture Cllr S Ali	12	11	10	9.5	10	10	8	20%		GREEN
<p>Monthly Performance: This is the second set of results undertaken by the new independent inspectors [second of three tranches]. The maturing contractual relationship with Veolia and joint tasking and deployment of public realm / CS staff have had a beneficial effect on behaviours and contract management and the results remain encouraging. It should be noted that each tranche takes samples from different parts of the Borough and variations over the three tranches should be expected.</p>												
LAANI195c. National195c. Strategic214	Improved street and environmental cleanliness - graffiti Measured in: % Good Performance: Lower	Jamie Blake Communities, Localities & Culture Cllr S Ali	16	7	20	18.5	6	6	12	-100.00%		RED

PI Ref No	PI Description	Responsible Officer & Directorate	Outturn 2008/09	Target 2009/10	Actual 2009/10	Actual December 2009/10	Target 2010/11	Target December 2010/11	Actual December 2010/11	Variance (comparing actual to target)	Direction of Travel (comparing Dec 10/11 and Dec 09/10)	Traffic Light (RED / GREEN)														
<div style="border: 1px solid black; padding: 5px; margin-bottom: 10px;"> <p>Monthly Performance:</p> <p>This is the second set of results undertaken by the new independent inspectors who use a sampling methodology spanning the Borough over three tranches [each tranche takes samples from a specific part of the Borough]. An analysis of the results has identified two key areas where the scores were exceptionally high and where the Council has very little direct control; industrial/warehouseing [with a score of 18] and high obstruction housing [with a score of 13]. A significant amount of work is being undertaken by the team to address graffiti issues. A draft community/council pledge that will set the policy for a wide range of environmental issues is being prepared; this will identify how the council will address the issues and what the Council will expect residents, businesses, tenants to do as part of their social/collective responsibility. The Service is continuing to increase the use of statutory notices to force private land owners to remove graffiti and the Service will also be addressing the issue of graffiti with the RSL's through the Public Realm Sub Group. Smarter working with Veolia on utilising the graffiti removal team more effectively is ongoing and the continuing success of covert operations with the police to tackle those responsible for doing graffiti will be rolled out further once service integration is rolled out.</p> </div> <div style="border: 1px solid black; padding: 5px;"> <table border="1" style="display: none;"> <caption>Chart Data (Top)</caption> <thead> <tr> <th>Category</th> <th>Value</th> </tr> </thead> <tbody> <tr> <td>2009/10 Outturn</td> <td>8</td> </tr> <tr> <td>2010/11 Target</td> <td>2</td> </tr> <tr> <td>10/11 Monthly Actual (July)</td> <td>7.5</td> </tr> <tr> <td>10/11 Monthly Actual (November)</td> <td>4</td> </tr> <tr> <td>10/11 Monthly Actual (March)</td> <td>4</td> </tr> <tr> <td>10/11 Monthly Target</td> <td>2</td> </tr> </tbody> </table> </div>													Category	Value	2009/10 Outturn	8	2010/11 Target	2	10/11 Monthly Actual (July)	7.5	10/11 Monthly Actual (November)	4	10/11 Monthly Actual (March)	4	10/11 Monthly Target	2
Category	Value																									
2009/10 Outturn	8																									
2010/11 Target	2																									
10/11 Monthly Actual (July)	7.5																									
10/11 Monthly Actual (November)	4																									
10/11 Monthly Actual (March)	4																									
10/11 Monthly Target	2																									
LAANI195d, National195d, Strategic215	Improved street and environmental cleanliness - fly-posting Measured in: % Good Performance: Lower	Jamie Blake Communities, Localities & Culture Cllr S Ali	5	2	8	7.5	2	2	4	-100%	↑	RED														
<p>Monthly Performance:</p> <p>This is the second set of result undertaken by the new independent inspectors. Whilst the target has not been achieved, the improvement over last years outturn is substantial [Outturn of 8% for 2010-11]. The Local Environmental team has been working alongside our contractor, Veolia, in tackling fly posting. The issuing of fixed penalty notices and further action to prosecute those that continue to fly post along with a range of other strategies appears to be driving a significant reduction in the borough since last year. These results still remain very encouraging.</p> <div style="border: 1px solid black; padding: 5px; margin-top: 10px;"> <table border="1" style="display: none;"> <caption>Chart Data (Bottom)</caption> <thead> <tr> <th>Category</th> <th>Value</th> </tr> </thead> <tbody> <tr> <td>2009/10 Outturn</td> <td>8</td> </tr> <tr> <td>2010/11 Target</td> <td>2</td> </tr> <tr> <td>10/11 Monthly Actual (July)</td> <td>7.5</td> </tr> <tr> <td>10/11 Monthly Actual (November)</td> <td>4</td> </tr> <tr> <td>10/11 Monthly Actual (March)</td> <td>4</td> </tr> <tr> <td>10/11 Monthly Target</td> <td>2</td> </tr> </tbody> </table> </div>													Category	Value	2009/10 Outturn	8	2010/11 Target	2	10/11 Monthly Actual (July)	7.5	10/11 Monthly Actual (November)	4	10/11 Monthly Actual (March)	4	10/11 Monthly Target	2
Category	Value																									
2009/10 Outturn	8																									
2010/11 Target	2																									
10/11 Monthly Actual (July)	7.5																									
10/11 Monthly Actual (November)	4																									
10/11 Monthly Actual (March)	4																									
10/11 Monthly Target	2																									

PI Ref No	PI Description	Responsible Officer & Directorate	Outturn 2008/09	Target 2009/10	Actual 2009/10	Actual December 2009/10	Target 2010/11	Target December 2010/11	Actual December 2010/11	Variance (comparing actual to target)	Direction of Travel (comparing Dec 10/11 and Dec 09/10)	Traffic Light (RED / GREEN)
Theme 3: A Prosperous Community												
Strategic308. National117	16 to 18 year olds who are not in education, employment or training (NEET) Measured in: % Good Performance: Lower	Mary Durkin Children, Schools & Families Cllr O Rahman	6.7	6.25	6	6.2	5.5	5.7	5.7	MET		GREEN
Monthly Performance: In December the percentage of young people not in education, employment and training was 5.7%, an improvement compared to the same period last year where the result was 6.2% and we are on track to meet the year end target of 5.5%.												
Strategic309 National146	Adults with learning disabilities into employment Measured in: % Good Performance: Higher	Helen Taylor Adults, Health & Wellbeing Mayor L Rahman	3.3	3.1	3.4	0.3	3.1	2.55	0.17	-93.30%		RED
Monthly Performance: Performance increases as Assessments and Reviews are carried out in the reporting year. In 2009/10 we experienced a large number of clients meeting criteria in the latter months of the year. It is therefore expected that an increase in performance will be reporting over the next few months.												
Strategic310. National150	Adults receiving secondary mental health services in employment Measured in: % Good Performance: Higher	Helen Taylor Adults, Health & Wellbeing Mayor L Rahman	2.4	3.5	4.8	6	3.5	3.5	5.70	62.90%		GREEN

Appendix 8 - Strategic Performance Indicators

PI Ref No	PI Description	Responsible Officer & Directorate	Outturn 2008/09	Target 2009/10	Actual 2009/10	Actual December 2009/10	Target 2010/11	Target December 2010/11	Actual December 2010/11	Variance (comparing actual to target)	Direction of Travel (comparing Dec 10/11 and Dec 09/10)	Traffic Light (RED / GREEN)
<p>Monthly Performance: Target exceeded.</p>												
Strategic311. National151	Overall employment rate (working age) Measured in: % Good Performance: Higher	Nick Smales Development & Renewal Cllr R Khan	60.8	54.9	60.4	67.8	55.7	55.7	60.1	7.90%		GREEN
<p>Monthly Performance: The Council was previously advised to use the DCLG's Floor Targets Interactive website for data collection. The last employment rate update was available in September 2010, which (due to a timelag in data reporting) reported the employment rate for the period September 2009. However, Floor Targets Interactive has since been replaced with the Places Database. Since this replacement no further data has been available on either source.</p> <p>The Office of National Statistics is however updating employment rate figures through Nomis . According to Nomis the employment rate for TH is 61.9% (June 2010 data). If this were used, this would should a 1.8 percentage points rise in employment rate of TH.</p>												
Strategic312. National152a	Working age people on out of work benefits. By May 2011 (Q2 data) narrow the gap to the England average rate to a maximum of -5.7 percentage points. Measured in: % (This indicator measures the percentage of the working age population who are claiming out of work benefits - reducing the gap from the national average.) Good Performance: Higher	Nick Smales Development & Renewal Cllr R Khan	N/A	-5.7	-4.9	N/A	-5.7	-5.7	-5	12.30%	N/A	GREEN
<p>Monthly Performance: Target met, as the gap between LBTH and the England average rate is less than - 5.7 percent. The gap is currently -5.0 percent.</p> <p>No updates are available on the Government's Places Database which has replaced Floor Targets Interactive. The last update was in October 2010 which represents data for Q4 2009/2010.</p>												

Appendix 8 - Strategic Performance Indicators

PI Ref No	PI Description	Responsible Officer & Directorate	Outturn 2008/09	Target 2009/10	Actual 2009/10	Actual December 2009/10	Target 2010/11	Target December 2010/11	Actual December 2010/11	Variance (comparing actual to target)	Direction of Travel (comparing Dec 10/11 and Dec 09/10)	Traffic Light (RED / GREEN)
Strategic313 National153a	Working age people claiming out of work benefits in the worst performing neighbourhoods. By May 2011 (Q2 data) extend the lead over the England average rate to at least 3.1 percentage points Measured in: % (This indicator measures the percentage of the working age population who are claiming out of work benefits in the lowest performing neighbourhoods - reducing the gap from the national average) Good Performance: Higher	Nick Smales Development & Renewal Cllr R Khan	N/A	3.1	4.4	N/A	3.1	3.1	4.3	38.70%	N/A	GREEN
Monthly Performance: TH have a 4.3 percentage points lead over the England average rate. No updates are available on the Government's Places Database which has replaced Floor Targets Interactive. The last update was in September 2010 which represents data for Q4 2009/10.												
National072. Strategic315	Achievement of at least 78 points across the Early Years Foundation Stage with at least 6 in each of the scales in Personal Social and Emotional Development and Communication, Language and Literacy Measured in: % (measured from birth to end of academic year in which a child turns 5, at least 6 points or more in the 13 EYFS statutory framework) Good Performance: Higher	Anne Canning Children, Schools & Families Cllr O Rahman	40	45.3	42.9	42.9	46.00	46	46	MET	↑	GREEN
Annual Performance: Final 2010/11 attainment result: 46% is the final result for Achievement of at least 78 points across the Early Years Foundation Stage with at least 6 in each of the scales in Personal Social and Emotional Development and Communication, Language and Literacy. We achieved our target.												
National073. Strategic327	Achievement at level 4 or above in both English and Maths at Key Stage 2 Measured in: % Good Performance: Higher	Anne Canning Children, Schools & Families Cllr O Rahman	74	79	74	74	80.00	80	76	-5.00%	↑	RED

PI Ref No	PI Description	Responsible Officer & Directorate	Outturn 2008/09	Target 2009/10	Actual 2009/10	Actual December 2009/10	Target 2010/11	Target December 2010/11	Actual December 2010/11	Variance (comparing actual to target)	Direction of Travel (comparing Dec 10/11 and Dec 09/10)	Traffic Light (RED / GREEN)
<p>Annual Performance:</p> <p>Final 2010/11 attainment result: 76% is the final result for achievement at level 4 or above in both English and Maths at Key Stage 2 for academic year 2009/10 (Financial Year 2010/11), which means we have not met our target. However, it is an ambitious target and currently we are 3 percentage points above the national outcome and we have improved by 1 percentage point since the previous results. We aim to meet the target each year. This is an achievable target though ambitious and we expect to get closer to it each year - but then the target will also rise each year. The LA has a history of setting ambitious targets and this stretch target does support the school improvement agenda. The key challenges are that the percentage of pupils achieving Level 4+ in reading dipped this year. We need to continue to focus on attainment at higher levels and address the issue of schools with inconsistent results.</p> <p>To improve performance we are doing the following:</p> <ul style="list-style-type: none"> - Continue to roll out the use of Assessing Pupils' Progress in KS2 across all subjects and in all schools. - Continue the implementation of Support for Writing and Talk for Writing training. - Continue to focus intensive support at the point of need. - Broadening the impact of Cognitive Acceleration of Mathematics Education (CAME) project – through the use of the CAME principles in all schools. - Increase the level of 1:1 Tuition provision across Key Stage 2 - Roll out of the progression in Language structures to support Speaking and Listening across all subjects. - Continue work of Priority Learning Local Authority (PLLA) with clusters of schools with inconsistent results working together. - Roll out of Every Child a Writer programme. 												
National075 Strategic325	Achievement of 5 or more A*- C grades at GCSE or equivalent including English and Maths	Anne Canning Children, Schools & Families Cllr O Rahman	41.2	50	45.8	45.8	53.00	53	51.8	-2.26%	↑	RED
<p>Annual Performance:</p> <p>Final 2010/11 attainment result: We report a year end result of 51.8% which is a significant improvement on the 45.6% reported last year, however we have not met the target of 53%.</p> <p>These are the best ever results for GCSE's in Tower Hamlets. It is well above the national rates of progress and just falling short of the national results by 1.6 percentage points. This result also shows a significant improvement in previously weak performing schools. There is currently a review of outcomes and progress through the School Improvement Programme (SIP) programme. The School Development Advisors (SDA's) are working with high performing and satisfactory schools to identify lack of improvement and lessons learnt for 2011.</p>												
National076 Strategic316	Reduction in number of schools where fewer than 55% of pupils achieve level 4 or above in both English and Maths at KS2	Anne Canning Children, Schools & Families Cllr O Rahman	3	1	6	6	1.00	1	0	MET	↑	GREEN

Appendix 8 - Strategic Performance Indicators

PI Ref No	PI Description	Responsible Officer & Directorate	Outturn 2008/09	Target 2009/10	Actual 2009/10	Actual December 2009/10	Target 2010/11	Target December 2010/11	Actual December 2010/11	Variance (comparing actual to target)	Direction of Travel (comparing Dec 10/11 and Dec 09/10)	Traffic Light (RED / GREEN)
<p>Annual Performance:</p> <p>Final 2010/11 attainment result: No schools where fewer than 55% of pupils achieve level 4 or above in both English and Maths at KS2 for academic year 2009/10 (Financial Year 2010/11). This is the final result and target has been met.</p>												
National076, Strategic318	Reduction in number of schools where fewer than 30% of pupils achieve 5 or more A*- C grades at GCSE and equivalent including GCSEs in English and Maths Measured in: % Good Performance: Lower	Anne Canning Children, Schools & Families Cllr O Rahman	3	6	1	35	0.00	0	0	MET	←	GREEN
<p>Annual Performance:</p> <p>Final 2010/11 attainment result: No schools where fewer than 30% of pupils achieve 5 or more A*- C grades at GCSE and equivalent including GCSEs in English and Maths. This is the final result and we have met our target.</p>												
National087, Strategic321	Secondary school persistent absence rate Measured in: % Good Performance: Lower	Anne Canning Children, Schools & Families Cllr O Rahman	4.8	4.6	4.4	4.4	4.2	4.2	3.2	-23.8	↑	RED
<p>Monthly Performance:</p> <p>Provisional 2010/11 attainment result: The provisional result for Secondary school persistent absence rate for Half Term 1-4 is 3.2%. The final results will be available in March 2011 via the DFE.</p>												
National092, Strategic321	Narrowing the gap between the lowest achieving 20% in the Early Years Foundation Stage Profile and the rest Measured in: % (The % gap between the median score of all children locally and the mean score of the lowest achieving 20% of children locally) Good Performance: Lower	Anne Canning Children, Schools & Families Cllr O Rahman	37.3	31.5	35	35	30.90	30.9	33.1	-7.11%	↑	RED

Appendix 8 - Strategic Performance Indicators

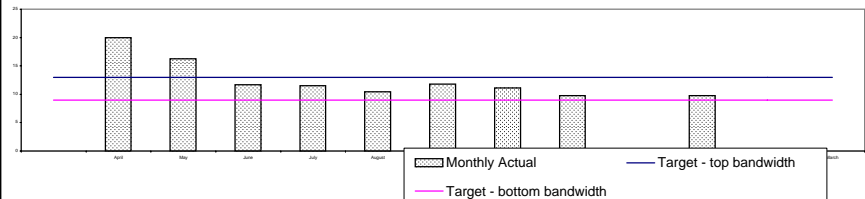
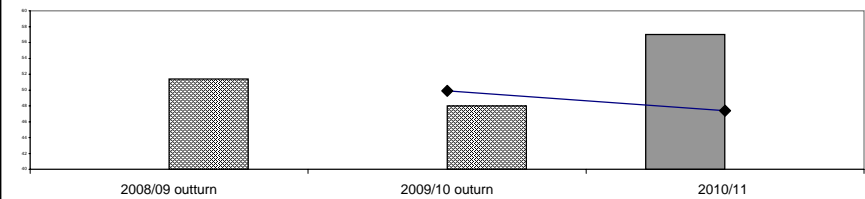
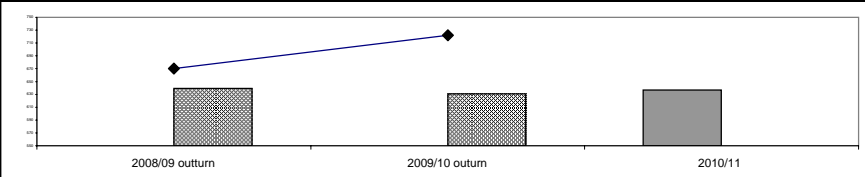
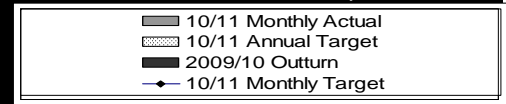
PI Ref No	PI Description	Responsible Officer & Directorate	Outturn 2008/09	Target 2009/10	Actual 2009/10	Actual December 2009/10	Target 2010/11	Target December 2010/11	Actual December 2010/11	Variance (comparing actual to target)	Direction of Travel (comparing Dec 10/11 and Dec 09/10)	Traffic Light (RED / GREEN)																				
	<p>Annual Performance:</p> <p><u>Final 2010/11 attainment result:</u> We have been successful in narrowing the gap to 33.1% compared to a 35.2% gap last year, however we have not met target to reduce the gap to 30.3%. The gap is narrower compared to the London average of 33.9% and our progress has been steady and sustained. This indicator measures the gap between the average result for the bottom 20% of children and the average result for the rest of children. The result for the bottom 20% has improved slightly this year but has not changed for the rest.</p> <p>The Early Years team has a targeted project working intensively with schools with low outcomes in order to narrow the gap. The accelerating gap between boys and girls remains a significant concern. Tower Hamlets Early Years team is identifying good practice in particularly successful schools. In the longer term, a change of priorities in the Children's Centres and schools will aim to target more support to children most at risk of poor progress; we expect to see accelerated progress towards closing the gap if this change of policy direction is supported.</p> <p>A changed focus in the early years, in line with the ethos and ambitions of Early Intervention, would see more rapid progress towards closing the gap; the target and date for achievement will depend on the level of LA support for this change in direction.</p>																															
<table border="1"> <caption>Chart Data</caption> <thead> <tr> <th>Year</th> <th>2009/10 Outturn</th> <th>10/11 Annual Target</th> <th>10/11 Monthly Actual</th> <th>10/11 Monthly Target</th> </tr> </thead> <tbody> <tr> <td>2008/09 outturn</td> <td>35.2%</td> <td>30.3%</td> <td>33.1%</td> <td>33.1%</td> </tr> <tr> <td>2009/10 outturn</td> <td>35.2%</td> <td>30.3%</td> <td>33.1%</td> <td>33.1%</td> </tr> <tr> <td>2010/11</td> <td>35.2%</td> <td>30.3%</td> <td>33.1%</td> <td>33.1%</td> </tr> </tbody> </table>													Year	2009/10 Outturn	10/11 Annual Target	10/11 Monthly Actual	10/11 Monthly Target	2008/09 outturn	35.2%	30.3%	33.1%	33.1%	2009/10 outturn	35.2%	30.3%	33.1%	33.1%	2010/11	35.2%	30.3%	33.1%	33.1%
Year	2009/10 Outturn	10/11 Annual Target	10/11 Monthly Actual	10/11 Monthly Target																												
2008/09 outturn	35.2%	30.3%	33.1%	33.1%																												
2009/10 outturn	35.2%	30.3%	33.1%	33.1%																												
2010/11	35.2%	30.3%	33.1%	33.1%																												

Appendix 8 - Strategic Performance Indicators

PI Ref No	PI Description	Responsible Officer & Directorate	Outturn 2008/09	Target 2009/10	Actual 2009/10	Actual December 2009/10	Target 2010/11	Target December 2010/11	Actual December 2010/11	Variance (comparing actual to target)	Direction of Travel (comparing Dec 10/11 and Dec 09/10)	Traffic Light (RED / GREEN)
National093. Strategic322	Progression by 2 levels in English between Key Stage 1 and Key Stage 2 Measured in: % Good Performance: Higher	Anne Canning Children, Schools & Families Cllr O Rahman	86.5	92	89.1	89	93.00	93	88	-5.40%	↓	RED
Annual Performance:					<p>Final 2010/11 attainment result: The final result was 88% and target has not been met. This is disappointing as the result is lower than 89.1% reported in the previous year. We will continue to roll out the use of Assessing Pupils' Progress in KS2 across all subjects and in all schools and implementation of Support for Writing and Talk for Writing training. There will be a continued focus of intensive support at the point of need and we will be increasing the level of 1:1 Tuition provision across Key Stage 2. We are also rolling out the progression in Language structures to support Speaking and Listening across all subjects. Our continued work as a Priority Learning Local Authority (PLLA) ensures clusters of schools with inconsistent results are working together.</p>							
National094. Strategic323	Progression by 2 levels in Maths between Key Stage 1 and Key Stage 2 Measured in: % Good Performance: Higher	Anne Canning Children, Schools & Families Cllr O Rahman	84	85	87.2	87	88.00	88	87	-1.13%	↓	RED
Annual Performance:					<p>Final 2010/11 attainment result: We narrowly missed the target of 88% and report a final out turn of 87%, the same as for last year. This however is 4 percentage points above the national result. We will continue to implementat Mathematics Specialist Teacher Training and focus intensive support at point of need. We are broadening the impact of Cognitive Accleration of Mathematics Education (CAME) project in all schools and are increasing the level of 1:1 tuition across Key Stage 2 in mathematics. We will continue our work as a Priority Learning Local Authority (PLLA) to ensure clusters of schools with inconsistent results are working together.</p>							
National099. Strategic325	Looked after children reaching level 4 in English at Key Stage 2 Measured in: % Good Performance: Higher	Helen Lincoln Children, Schools & Families Cllr O Rahman	50	53	50	50	53	53	37.5	-29.24%	↓	RED

PI Ref No	PI Description	Responsible Officer & Directorate	Outturn 2008/09	Target 2009/10	Actual 2009/10	Actual December 2009/10	Target 2010/11	Target December 2010/11	Actual December 2010/11	Variance (comparing actual to target)	Direction of Travel (comparing Dec 10/11 and Dec 09/10)	Traffic Light (RED / GREEN)
<p>Monthly Performance:</p> <p><u>Provisional 2010/11 attainment result:</u> 37.5% is the provisional result for Looked after children reaching level 4 in English at Key Stage 2 published by the DFE. The final result will be available at the end of Feb 2011 this is because we are awaiting the source data from DFE, which will still be analysed and checked by our data team and sent back to DFE for final publication by end of February 2011.</p>												
National100-Strategic326	Looked after children reaching level 4 in mathematics at Key Stage 2	Helen Lincoln Children, Schools & Families Cllr O Rahman	36.4	53	35.71	35.71	53	53	25	-52.83%	↓	RED
<p>Monthly Performance:</p> <p><u>Provisional 2010/11 attainment result:</u> 25.0% is the provisional result for Looked after children reaching level 4 in Mathematics at Key Stage 2 published by the DFE. The final result will be available at the end of Feb 2011 this is because we are awaiting the source data from DFE, which will still be analysed and checked by our data team and sent back to DFE for final publication by end of February 2011.</p>												
National101-Strategic327	Looked after children achieving 5 A*-C GCSEs (or equivalent) at Key Stage 4 (including English and mathematics)	Helen Lincoln Children, Schools & Families Cllr O Rahman	6.7	23	13.89	13.89	20	20	14.8	-26%	↑	RED
<p>Monthly Performance:</p> <p><u>Provisional 2010/11 attainment result:</u> 14.8% is the provisional result for Looked after children achieving 5 A*-C GCSEs (or equivalent) at Key Stage 4 (including English and mathematics) published by the DFE. The final result will be available at the end of Feb 2011 this is because we are awaiting the source data from DFE, which will still be analysed and checked by our data team and sent back to DFE for final publication by end of February 2011.</p>												
Strategic301	Improving A Level attainment - A Level Average Points Score per student in Tower Hamlets	Anne Canning Children, Schools & Families Cllr O Rahman	639.5	722	631	631	N/A	N/A	636.6	N/A	↑	N/A

PI Ref No	PI Description	Responsible Officer & Directorate	Outturn 2008/09	Target 2009/10	Actual 2009/10	Actual December 2009/10	Target 2010/11	Target December 2010/11	Actual December 2010/11	Variance (comparing actual to target)	Direction of Travel (comparing Dec 10/11 and Dec 09/10)	Traffic Light (RED / GREEN)
<p>Annual Performance:</p> <p>Final 2010/11 attainment result: In 2009/10 academic year the A-level Average Points Score (APS) per learner was 636.6. The result was up by 5.6 average points score per learner from last year. This is a positive result and demonstrates the council's commitment to improve level 3 attainment.</p> <p>A-Level 3 improvement plan has been agreed through the Hub Board and CS&F DMT. In particular this focuses on admissions procedures and ensuring all learners are placed on programmes where they can succeed, on rigorous use of data to track progress and address underperformance.</p> <p>The 14-19 HUB team are currently reviewing A-level targets.</p>												
Strategic307 National116	Proportion of children in poverty Measured in: % Good Performance: Lower	Anne Canning Children, Schools & Families Cllr O Rahman	51.4	49.9	48	48	47.4	47.4	57	-20.25	N/A	RED
<p>Annual Performance:</p> <p>Final outturn comment: Under the revised measure our new baseline figure for 2007 is 63.6%. The measure is the proportion of children living in families in receipt of out of work benefits or in receipt of tax credits where their reported income is less than 60 per cent of median income.</p> <p>The latest performance data available is for 2008 and shows child poverty has reduced in the borough to 57%, even though we did not achieve the target this year. We have made a 6.6 percentage point reduction from 2007. This equates to 3,135 children lifted out of poverty in 2008. This is a very positive result and reflects our commitment to reducing child poverty in the borough. We have recently launched a Child Poverty Strategy and are undertaking a detailed Needs Assessment to further inform our work in this area. A number of research projects are also ongoing with families experiencing poverty to provide a more qualitative aspect to our understanding and responses to child poverty.</p>												
Theme 4: A Safe and Supportive Community												
Strategic413 National065	Percentage of children becoming the subject of Child Protection Plan for a second or subsequent time Measured in: % Good Performance: Lower	Helen Lincoln Children, Schools & Families Cllr O Rahman	6.8	7	8.03	7.8	9-13%	9-13%	9.74*	MET	↓	GREEN
<p>Monthly Performance: The December outturn is not available. There are slight delays in the timeliness of social care reporting due to the work required to support the unannounced inspection and ongoing private fostering and adoption inspections. The result for December will be available by the end of January.</p> <p>Performance in November was 9.74%. This is within the agreed target bandwidth of 9-13%. The target bandwidth has been set based on the LBTH performance range within the last three years. Banding for this indicator describes good performance as being between 9-13%. A very low level may mean that a local authority is not submitting some children to a Child Protection Plan who are in need. Conversely, a high level may suggest that the professionals responsible for the child's welfare are not intervening effectively to bring about the required changes. It is also expected that each child's individual circumstances will differ and therefore a zero percentage return on this indicator is not expected.</p>												



Appendix 8 - Strategic Performance Indicators

PI Ref No	PI Description	Responsible Officer & Directorate	Outturn 2008/09	Target 2009/10	Actual 2009/10	Actual December 2009/10	Target 2010/11	Target December 2010/11	Actual December 2010/11	Variance (comparing actual to target)	Direction of Travel (comparing Dec 10/11 and Dec 09/10)	Traffic Light (RED / GREEN)
Strategic412. National135	Carers receiving needs assessment or review and a specific carer's service, or advice and information Measured in: % (number of carers whose needs were assessed or reviewed by the council in a year who received a specific carer's service, or advice and information in the same year as a percentage of people receiving a community based service in the year) Good Performance: Higher	Deborah Cohen Adults, Health & Wellbeing Mayor L Rahman	30.1	25.9	33.9	22.1	30.90	23.2	19.70	-15.08%	↓	RED
Monthly Performance: Comments requested												
Strategic402. National015	Number of most serious violent crimes per 1,000 population Measured in: Number (No. of recorded most serious violent crimes/total population x 1000) Good Performance: Lower	Andy Bamber Communities, Localities & Culture Mayor L Rahman	2.35	2.28	2.14	1.64	2.0972	1.57	1.49	5.09%	↑	GREEN
Monthly Performance: Target exceeded.												
Strategic403. National016	Number of serious acquisitive crimes per 1,000 population Measured in: Number (No. of recorded serious acquisitive crimes/total population x 1000) Good Performance: Lower	Andy Bamber Communities, Localities & Culture Mayor L Rahman	25.51	25.05	20.29	15.15	20.09	15.06	17.17	-14%	↓	RED

Appendix 8 - Strategic Performance Indicators

PI Ref No	PI Description	Responsible Officer & Directorate	Outturn 2008/09	Target 2009/10	Actual 2009/10	Actual December 2009/10	Target 2010/11	Target December 2010/11	Actual December 2010/11	Variance (comparing actual to target)	Direction of Travel (comparing Dec 10/11 and Dec 09/10)	Traffic Light (RED / GREEN)
Monthly Performance: Comments requested												
Strategic407, National033i	Arson incidents - Number of deliberate primary fires per 10,000 population. Measured in: Number (Primary is casualty, rescue or escape) Good Performance: Lower	Andy Bamber Communities, Localities & Culture Mayor L Rahman	9.99	11.9	7.3	5.96	11.5	8.63	7.21	16.45%	↓	GREEN
Monthly Performance: Target exceeded.												
Strategic408, National033ii	Number of deliberate secondary fires per 10,000 population. (Arson) Measured in: Number (Secondary is not involving property & did not involve casualties or rescues) Good Performance: Lower	Andy Bamber Communities, Localities & Culture Mayor L Rahman	20.99	35.8	11.43	9.62	34.7	26.03	13.02	49.98%	↓	GREEN
Monthly Performance: Target exceeded.												

PI Ref No	PI Description	Responsible Officer & Directorate	Outturn 2008/09	Target 2009/10	Actual 2009/10	Actual December 2009/10	Target 2010/11	Target December 2010/11	Actual December 2010/11	Variance (comparing actual to target)	Direction of Travel (comparing Dec 10/11 and Dec 09/10)	Traffic Light (RED / GREEN)
national040	Number of drug users recorded as being in effective treatment Measured in: % Good Performance: Higher	Andy Bamber Communities, Localities & Culture Mayor L Rahman	1434	1399	1509	1528	1413	1413	1577	11.6		GREEN
Monthly Performance: Target exceeded. The indicator definition measures the change in the total number of drug users, using crack and/or opiates recorded as being in effective treatment, when compared with the number of drug users using crack and/or opiates recorded as being in effective treatment in the baseline year of 2007/8. For in year reporting, we report the actual number of people in effective drug treatment. We will calculate as per the definition at year end.												
National018	Rate of proven re-offending by adults under Probation supervision Measured in: % Good Performance: Lower	Andy Bamber Communities, Localities & Culture Mayor L Rahman	3.78	-4.98	2.29	-0.52	-9.97	-9.97	-0.95	-90.50%		RED
Monthly Performance: This is the latest data published by the Ministry of Justice. There is 7 months time lag and this data is up to June 2010. Whilst we are off target, this latest performance represents significant improvement and best performance for Tower Hamlets so far.												
Strategic405. National019	Rate of proven re-offending by young offenders aged 10-17 Measured in: Number (average number of re-offences per young person) Good Performance: Lower	Mary Durkin Children, Schools & Families Clr O Rahman	1.1	1.13	1.15	0.65	1.08	0.54	0.54	MET		GREEN
Monthly Performance: We have met target for the latest quarter and are on track to achieve target by the end of the year. A rate of 0.54 is recorded which demonstrates that re offending is reducing in line with our expectations.												
Theme 5: A Healthy Community												

Appendix 8 - Strategic Performance Indicators

PI Ref No	PI Description	Responsible Officer & Directorate	Outturn 2008/09	Target 2009/10	Actual 2009/10	Actual December 2009/10	Target 2010/11	Target December 2010/11	Actual December 2010/11	Variance (comparing actual to target)	Direction of Travel (comparing Dec 10/11 and Dec 09/10)	Traffic Light (RED / GREEN)
Strategic504 National056d	Percentage of children in Year 6 with height and weight recorded who are obese. Measured in: % Good Performance: Lower	Layla Richards Children, Schools & Families	24.49	23.6	25.7	25.7	23.7	23.7	25.7	-8.40%		RED
<p>Monthly Performance:</p> <p><u>Final outturn comment:</u> We have not met the target this year but halted the rise of obesity that we have seen in Tower Hamlets since the measurement of year 6 children started in 2006/07.</p> <p>Looking at the data relating to childhood obesity as measured at Year 6 for the past 4 years (2006/07 – 23%, 2007/08 – 24.5%, 2008/09 – 25.7% and 2009/10 - 25.7%) we can see that between 2008/09 and 2009/10 childhood obesity has plateaued at 25.7%. This is a significant improvement as the previous years have shown a 1.5 and 1.2 percentage points increase respectively.</p>												
LAANI123 National123 Strategic509	Stopping smoking Measured in: number Good Performance: Higher	Alwen Williams Primary Care Trust Mayor L Rahman	1253	1043	1489	N/A	1061	N/A	705.04	N/A	N/A	N/A
<p>Monthly Performance:</p> <p>This measure defines quitters as those who have stopped smoking for a period of at least 4 weeks per 100,000 of the population in Tower Hamlets. Performance to November 2010 is 705 towards an annual target of 1061. This represents 1,286 people so far in 2010/11. There has been nearly double the number of quitters in Q2 as there were in Q3. If the number of smoking quitters grows proportionally in Q4 as it did in Q1,2 and 3, the target for this indicator will be exceeded.</p> <p>A recent testing program of smoking quitters showed that of the 70% (approx) of clients who had said they were no longer smoking after the 4 week program, 85% had their non-smoking status confirmed by the results from a carbon monoxide test.</p> <p>The PCT have reported that evaluations of both the smoking prevention and smoking cessation workstreams have been drafted, and recommendations are being incorporated into action plans. The smoking cessation programme has now been integrated into Diabetes and Cardio Vascular Disease care packages and the draft chronic, obstructive pulmonary disease care package.</p>												